

PENTAX Medical RetroView Colonoscopes EC-3490Ti

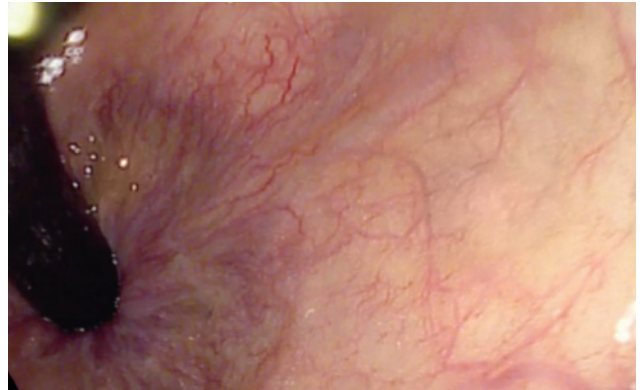
A high degree of flexibility with 210° tip deflection.



The flexibility of the new EC-3490Ti makes it possible to examine the mucosa even under difficult conditions. It is ideal for detection and treatment of polyps or lesions in areas that a conventional colonoscope could hardly reach. The scope furthermore has an excellent maneuverability due to a smaller bending radius of the distal tip and 210° deflection. Therefore, it is a valuable contribution to perform EMR or ESD.

EC-3490Ti

To facilitate detection and resection of even hard to reach lesions.



Excellent manoeuvrability

- Excellent manoeuvrability due to 210° deflection and minimised bending radius of the distal tip.

Advanced therapy

- Providing perfect combination of flexibility of the endoscope tip and stability of the endoscope body, thus providing a valuable contribution to secure EMR or ESD.

Advanced detection

- Outstanding combination of deflection (210°), visualisation capability (HD+) and excellent illumination in combination with i-scan for better orientation and detection.
- Integrated Water Jet System

Improved HD+ image quality

- Next generation megapixel CCD for improved HD+ image quality.
- Crisp, clear and bright endoscopic image combined with exceptional field of view for a superior visualisation of the mucosa.

Graduated flexibility

- Graduated flexibility of the insertion tube to increase patient comfort and examination performance.

RetroView Colonoscopes EC-3490Ti

Type	EC-3490TLi	EC-3490TFi	EC-3490TMi
Direction of viewing field	Forward	Forward	Forward
Field of view [°]	140	140	140
Dept of field [mm]	3 – 100	3 – 100	3 – 100
Tip deflection up/down [°]	210/180	210/180	210/180
Tip deflection right/left [°]	160/160	160/160	160/160
Distal end [Ø mm]	10.5	10.5	10.5
Insertion tube [Ø mm]	11.6	11.6	11.6
Instrument channel [Ø mm]	3.2	3.2	3.2
Working length [mm]	1,700	1,500	1,300

PENTAX Europe GmbH

Julius-Vosseler-Straße 104 . 22527 Hamburg . Germany
Tel.: +49 40 / 5 61 92 - 0 . Fax: +49 40 / 5 60 42 13
E-mail: medical@pentax.de . www.pentaxmedical.com

PENTAX
MEDICAL
Excellence in Focus